

Test Data Management

Software Version 24.1.0

Docker Installation on Windows Virtual Machines

opentext[™]

Document Release Date: January 2024
Software Release Date: January 2024

Legal notices

Copyright 2024 Open Text

The only warranties for products and services of Open Text and its affiliates and licensors (“Open Text”) are as may be set forth in the express warranty statements accompanying such products and services. Nothing herein should be construed as constituting an additional warranty. Open Text shall not be liable for technical or editorial errors or omissions contained herein. The information contained herein is subject to change without notice.

Documentation updates

The title page of this document contains the following identifying information:

- Software Version number, which indicates the software version.
- Document Release Date, which changes each time the document is updated.
- Software Release Date, which indicates the release date of this version of the software.

Support

Visit the [MySupport portal](#) to access contact information and details about the products, services, and support that OpenText offers.

This portal also provides customer self-solve capabilities. It gives you a fast and efficient way to access interactive technical support tools needed to manage your business. As a valued support customer, you can benefit by using the MySupport portal to:

- View information about all services that Support offers
- Submit and track service requests
- Contact customer support
- Search for knowledge documents of interest
- View software vulnerability alerts
- Enter into discussions with other software customers
- Download software patches
- Manage software licenses, downloads, and support contracts

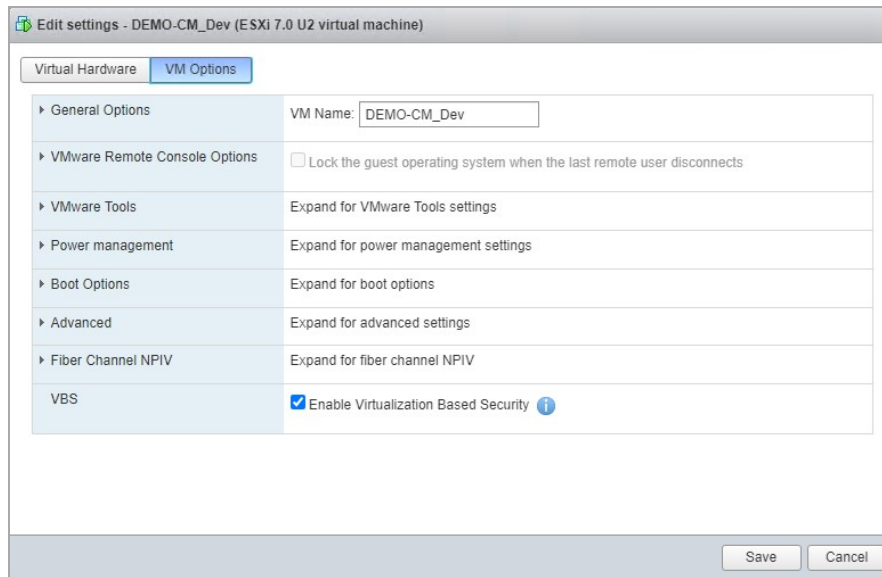
Many areas of the portal require you to sign in. If you need an account, you can create one when prompted to sign in.

Contents

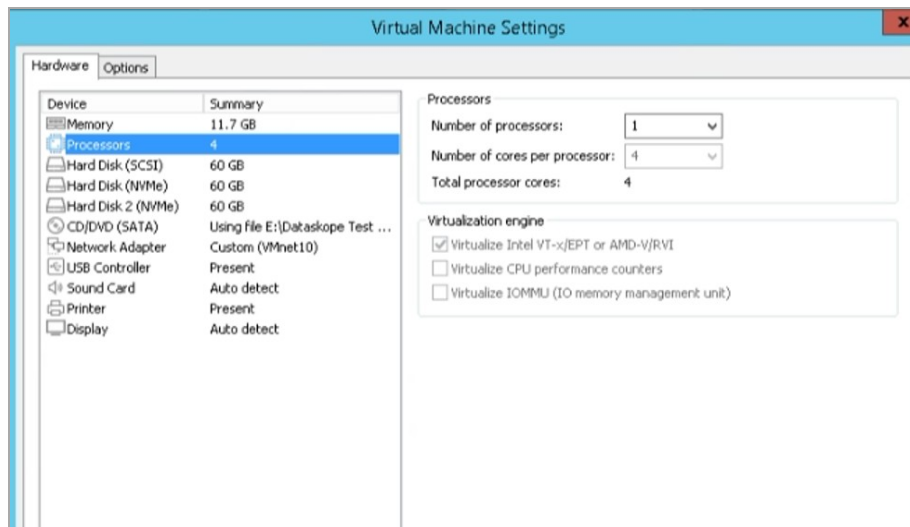
Virtual Machine configuration	4
Hyper-V installation	5
Docker installation	12

Virtual Machine configuration

1. Enable the VT (Virtual Technology) of the machine. Note that the configuration may vary for different types of virtual machines. The provided screenshots below specifically depict the configuration for VMWARE ESXi.



The screenshot given below shows the configuration for the VMWARE Workstation.

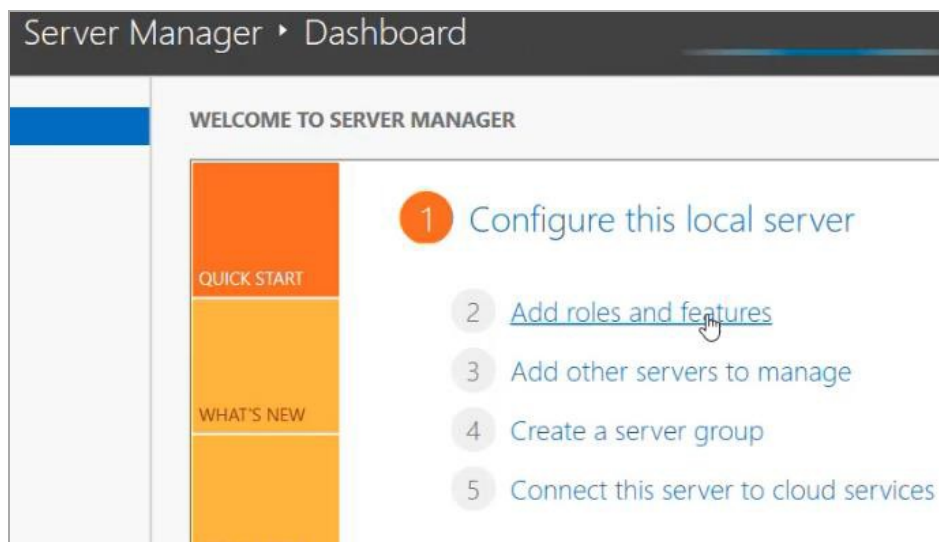


2. Restart the machine.

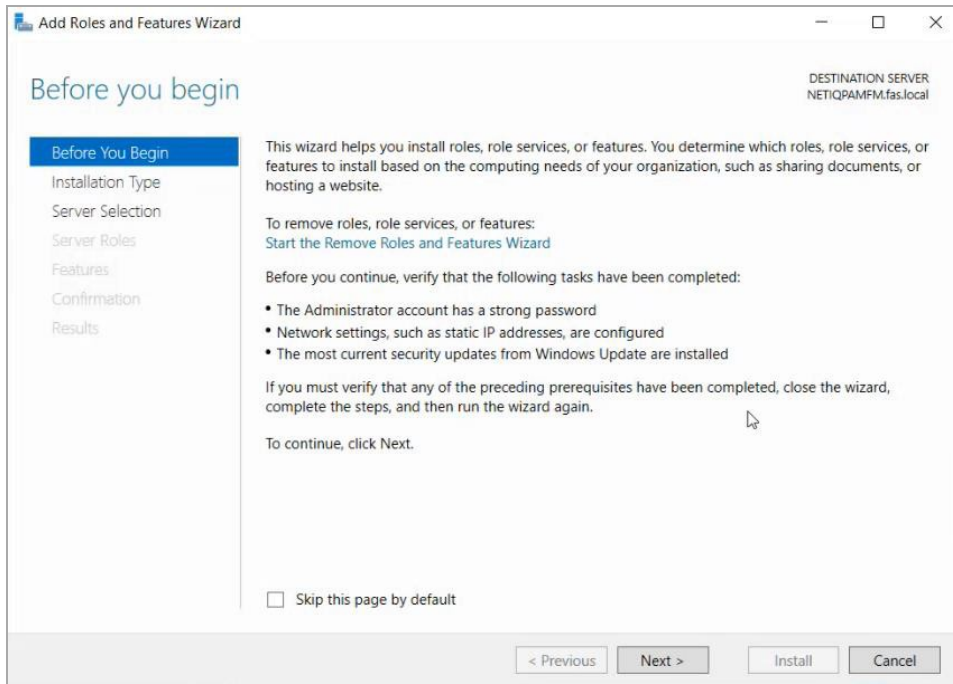
Hyper-V installation

For Docker to work properly, Hyper V must be installed priorly. To install Hyper VV, follow the steps below respectively.

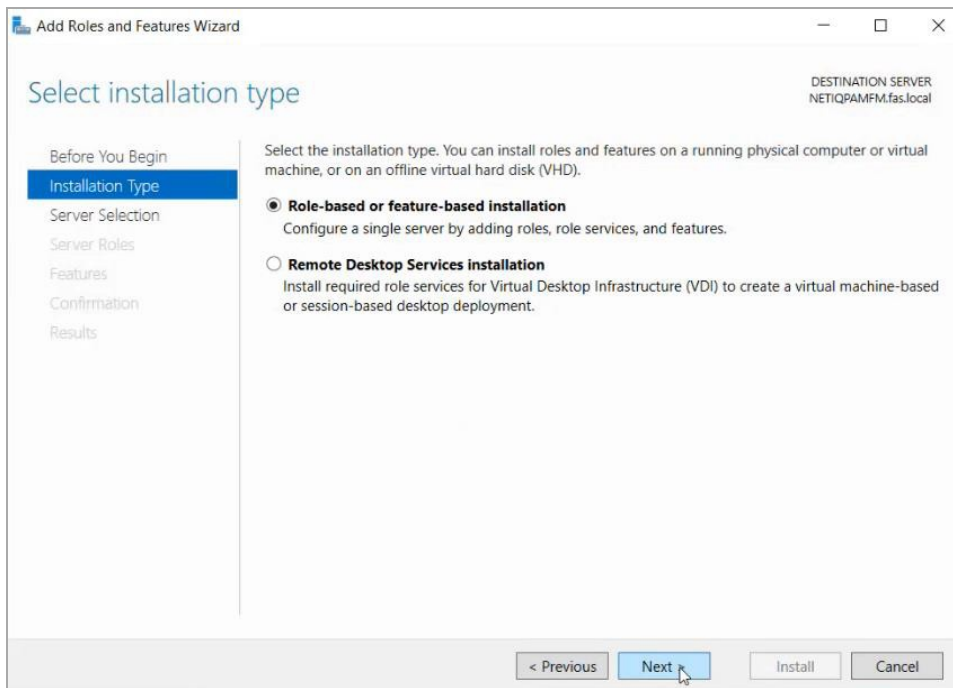
1. Go to **Server Manager > Dashboard**.
2. Click **Add roles and features**.



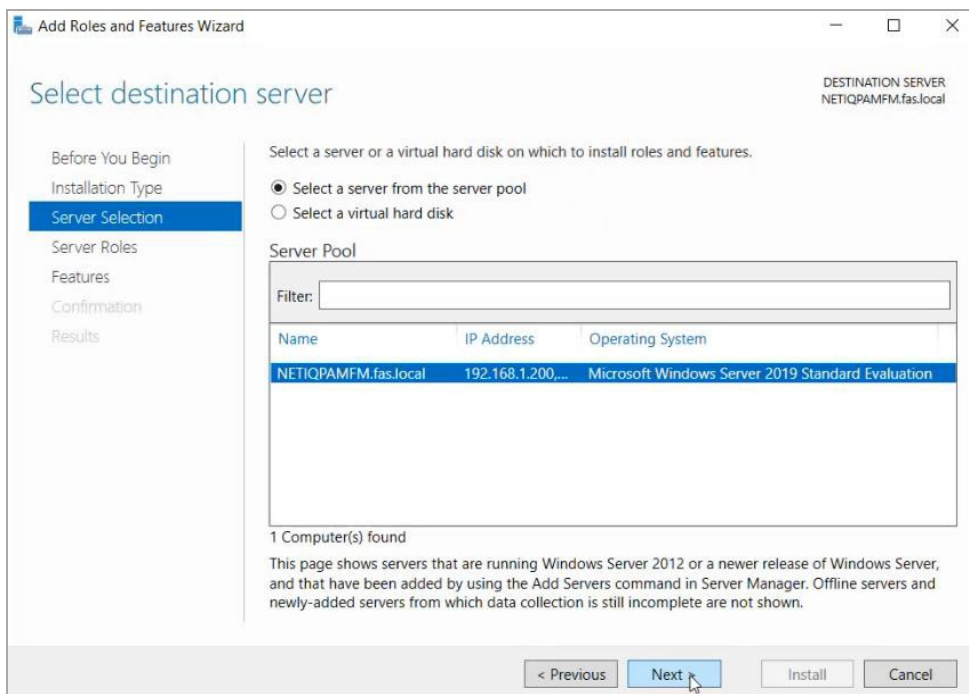
3. Follow the instructions within **Add Roles and Features Wizard** shown in the figures below. Click **Next**.



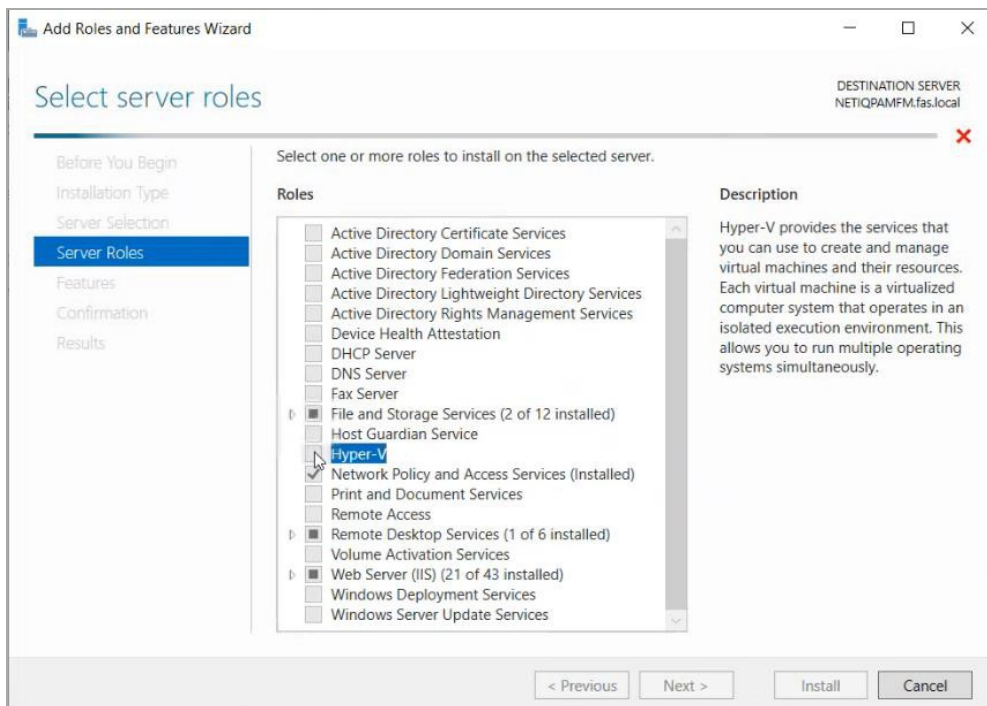
4. Click **Next**.



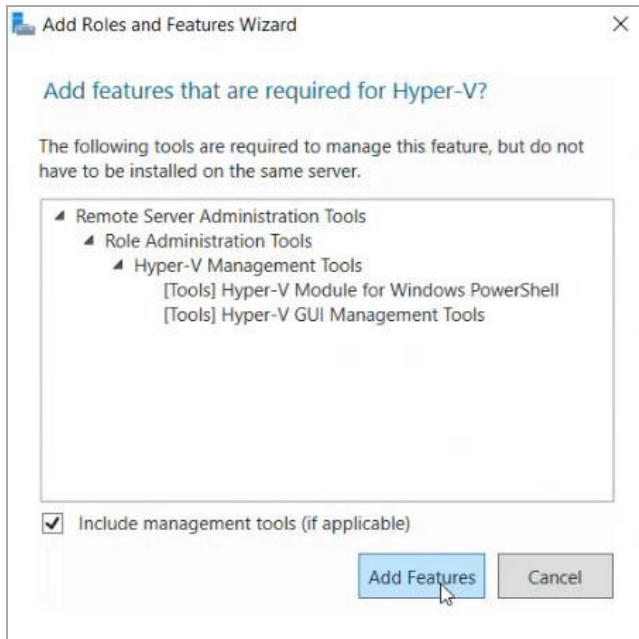
5. Click **Next**.



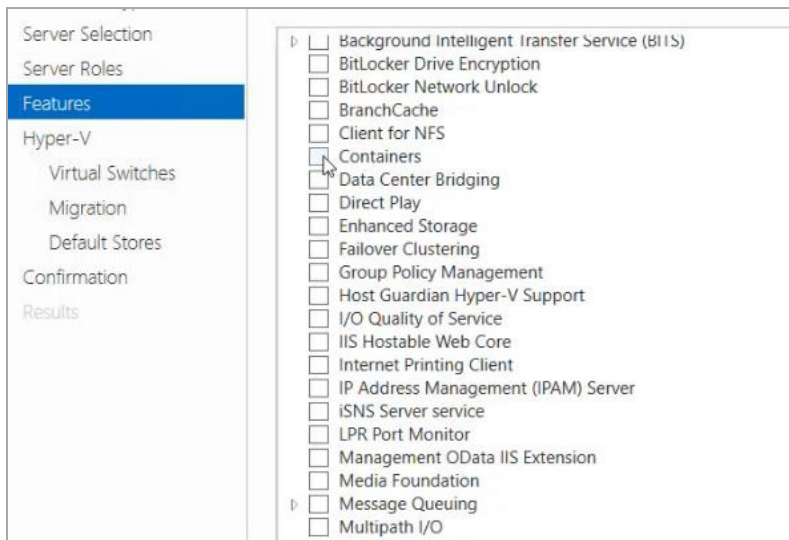
6. Check **Hyper V** option from **Roles** field and then, click **Next**.



7. Click **Add Features**.



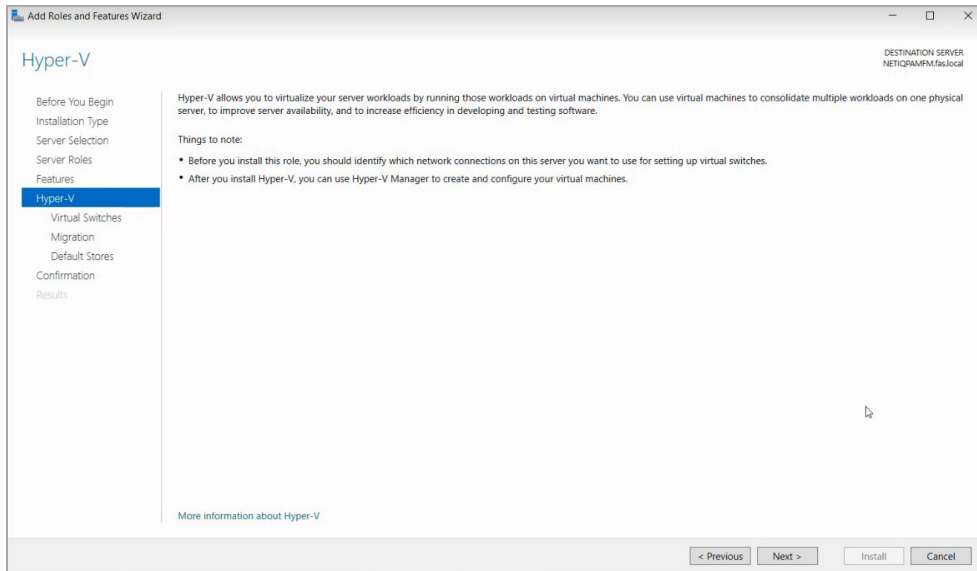
8. In **Features**, check the **Containers** and **Windows Subsystem for Linux** options.



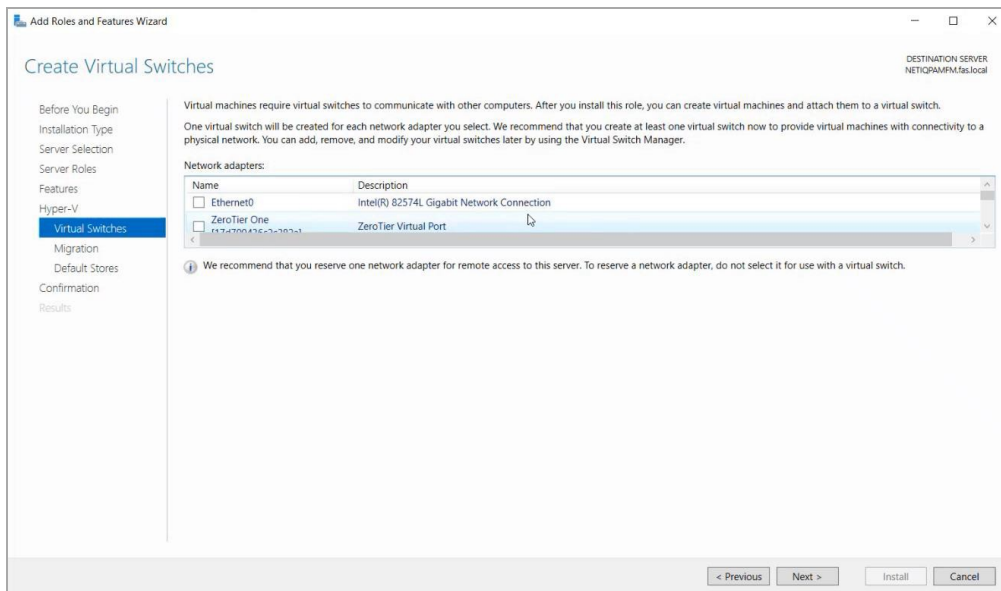
9. Click **Next**.

Docker Installation on Windows Virtual Machines

Hyper-V installation



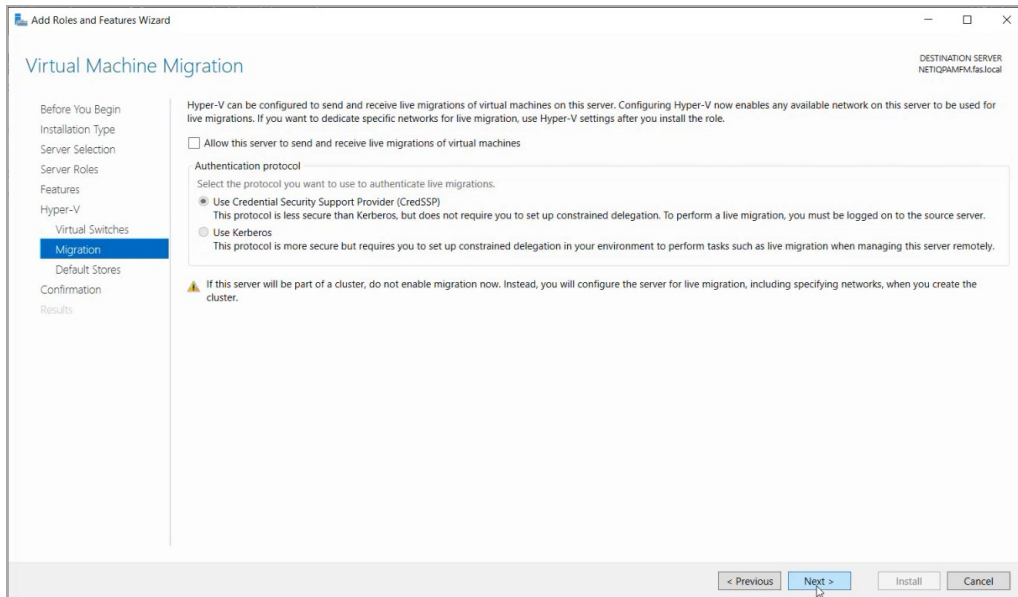
10. Click **Next**.



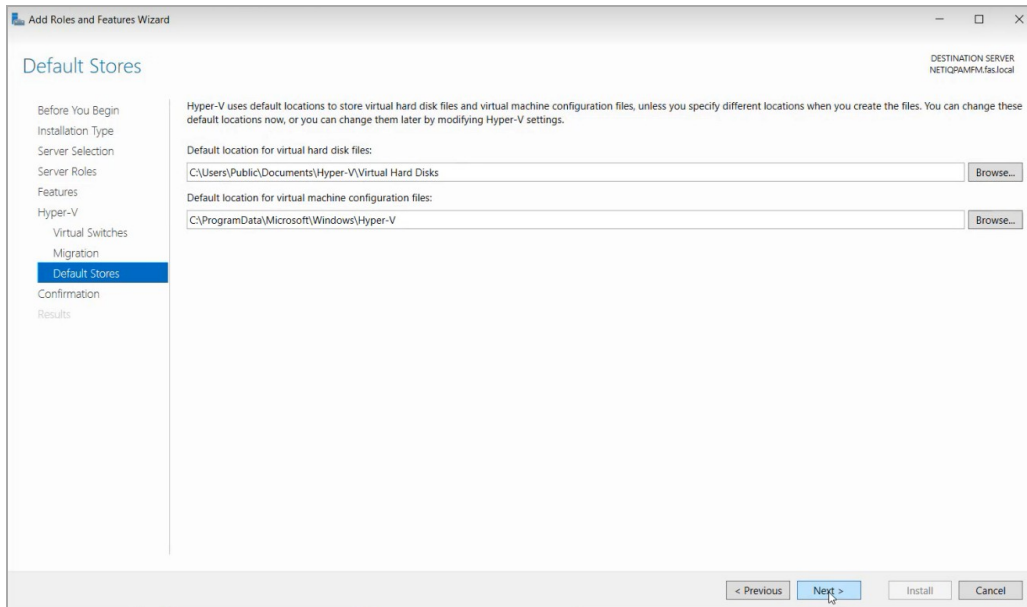
11. Click **Next**.

Docker Installation on Windows Virtual Machines

Hyper-V installation



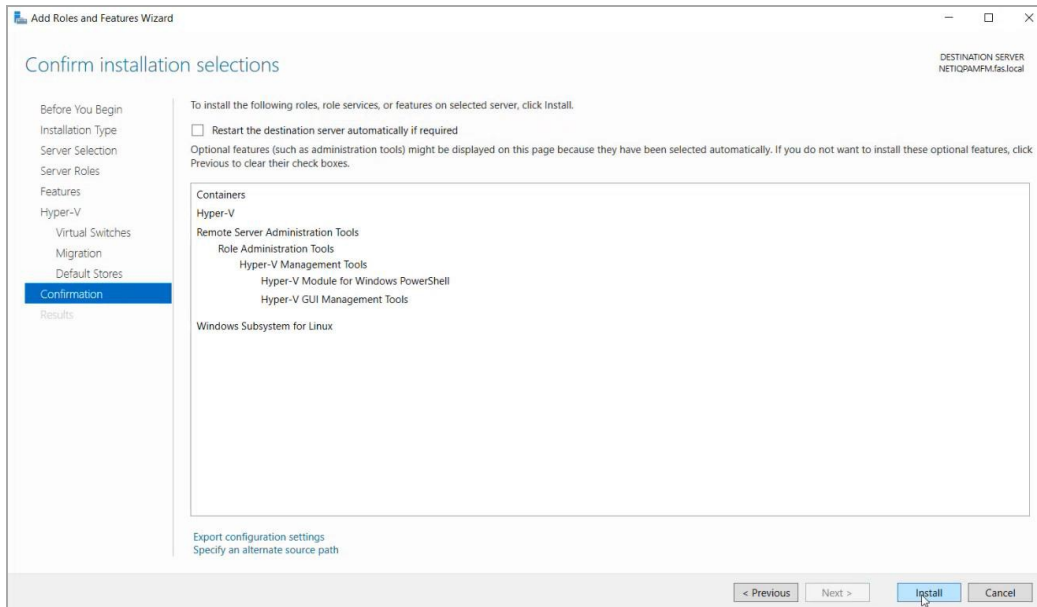
12. Click **Next**.



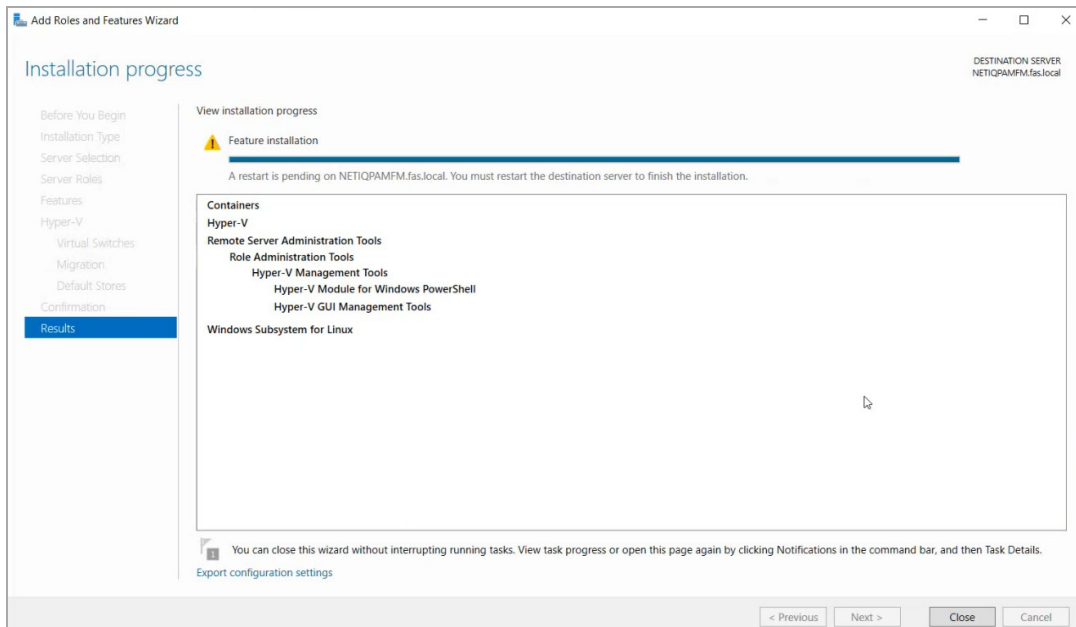
13. Click **Install**.

Docker Installation on Windows Virtual Machines

Hyper-V installation



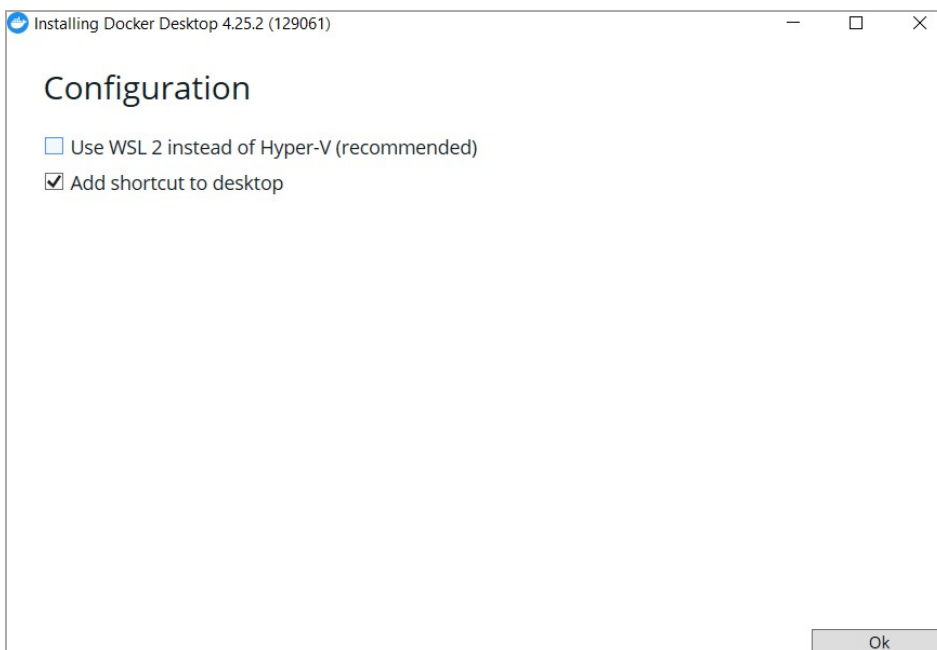
14. In Results, click **Close** and the machine will be restarted.



Docker installation

It is suggested to install Docker 4.20.0 . It can be downloaded from [the link](#).

For the higher version of Docker installation uncheck the Use WSL 2 instead of Hyper V (recommended) option during the installation step where the WSL features are set. The relevant screenshot is given below.



Open the PowerShell and run commands given below consequently.

- `dism.exe /online /enable feature /featurename:Microsoft Windows Subsystem Linux /all /norestart`
- `dism.exe /online /enable feature /featurename:VirtualMachinePlatform /all /norestart`

Open an administrator command prompt and run the command given below:

- `bcdedit /set hypervisorlaunchtype auto`

Restart the machine.