

ChangeMan ZMF

The most comprehensive and fully integrated solution for Software Change, Configuration, and Release Management on z/OS

Product Highlights

Confidently Develop and Deploy Mainframe Apps Faster

OpenText™ ChangeMan ZMF protects corporate assets and lets developers get more done in less time. It is a comprehensive system that provides reliable and streamlined implementation of software changes in a z/OS environment. It manages and automates the process of migrating software changes from a development environment through any test environments and into production. A comprehensive interface available through OpenText™ Eclipse or TSO/ISPF guides developers through various change management processes.

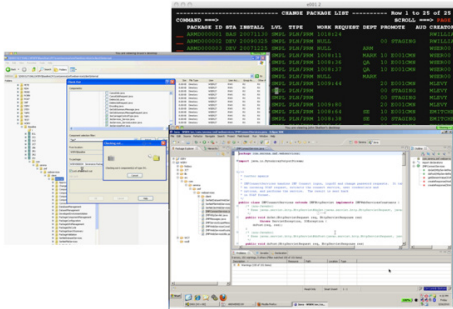


Figure 1. ChangeMan ZMF Client Interfaces

ChangeMan ZMF manages every code change. It guarantees source-to-load integrity and ensures that only successfully tested programs make it into production. ChangeMan ZMF reduces maintenance costs and regression errors by moving code through an automated lifecycle

with strict accountability and quality assurance at every step. It can integrate scheduling forms and approval processes online. It can support developer communication and perform regression analyses as part of the most thorough concurrent development available.

Key Features

- **Impact analysis**—Assess the ramifications of a change before it hits production
- **Version control**—Manage any number of component versions
- **Package audit**—Ensure that all artifacts are up to date and prevent back leveled code from getting deployed
- **Online approvals**—through email, web or mobile clients for fast and secure approvals in parallel, serial, or both
- **Concurrent development**—Eliminate overlays and cultivate developer communications
- **Freeze control**—Ensure that the changes tested are the ones put into production
- **Automated backout**—Revert to earlier code in seconds
- **Emergency protocols**—Protect the integrity of the system while allowing quick fixes
- **Automation**—Automate Websphere, CICS, IMS, and DB2 deployments
- **Open architecture**—Support for REST APIs, Java/XML, Web Services, and standard security environments

Advantages

- **Reliability**—Development conflicts are discovered and resolved early
- **Integrity**—Package-driven architecture maintains source to load integrity
- **Flexibility**—Highly configurable to meet environment and process requirements
- **Extensibility**—Nonproprietary infrastructure and industry standard REST APIs
- **Recoverability**—Full, safe backouts

Benefits

- Protects software assets
- Automates development process
- Simplifies audit compliance
- Prevents overlays and regression
- Enforces quality assurance measures
- Provides comprehensive build and release management
- REST APIs ensure ZMF can participate fully in new agile development pipelines
- Minimizes risk of Production failures
- Guarantees integrity in the application development cycle

Connect with Us

[OpenText CEO Mark Barrenechea's blog](#)



Benefits

Handle Your Software with Care: for Its Entire Lifecycle

ChangeMan ZMF supports your process of moving changes through an organization, and it treats change management as a business issue rather than a technical requirement. It eliminates missing source code problems. It employs Change Packages that enhance developer creativity while establishing consistency and improving management reporting. It increases system availability and can simplify software audits.

The change package architecture delivers unparalleled efficiency and management control. ChangeMan ZMF groups all components of a change together at the beginning, protecting the integrity of the entire change throughout the software lifecycle. A change package may contain up to thousands of components, and developers can act on entire groups of components with a single package command.

The Mainframe Is Not an Island

ChangeMan ZMF is built from the ground up to be open and scale from the smallest to the largest enterprise architectures. You don't need to know mainframe to work with ChangeMan ZMF. Developers have a choice of user interfaces, including traditional ISPF, Windows and Eclipse based IDEs such as OpenText Enterprise Developer which provides access to the functionality of ZMF without leaving the development environment. ChangeMan ZMF

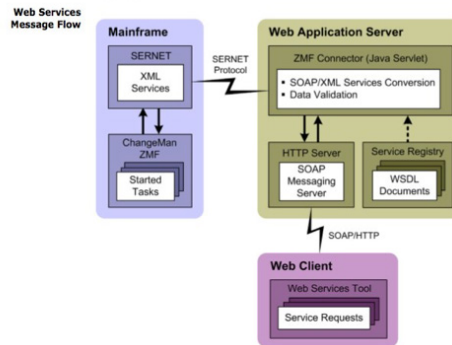


Figure 2. ChangeMan ZMF Web Services Message Flow

also includes REST Services, .NET, XML, and Web Services along with many user exits to provide open, easy, and secure access to your software artifacts from other tools and processes.

You can also build and deploy modern applications on z/OS as ChangeMan ZMF supports Java and zFS out of the box as well as services built using IBM z/OS Connect. So whether you are supporting your 20 year old legacy applications or managing modern workloads, ChangeMan ZMF delivers rock solid results.

System Requirements

For full details of system compatibility please check the Support Line site at: <https://support-line.microfocus.com/prodavail.aspx>

Learn more at

www.microfocus.com/opentext